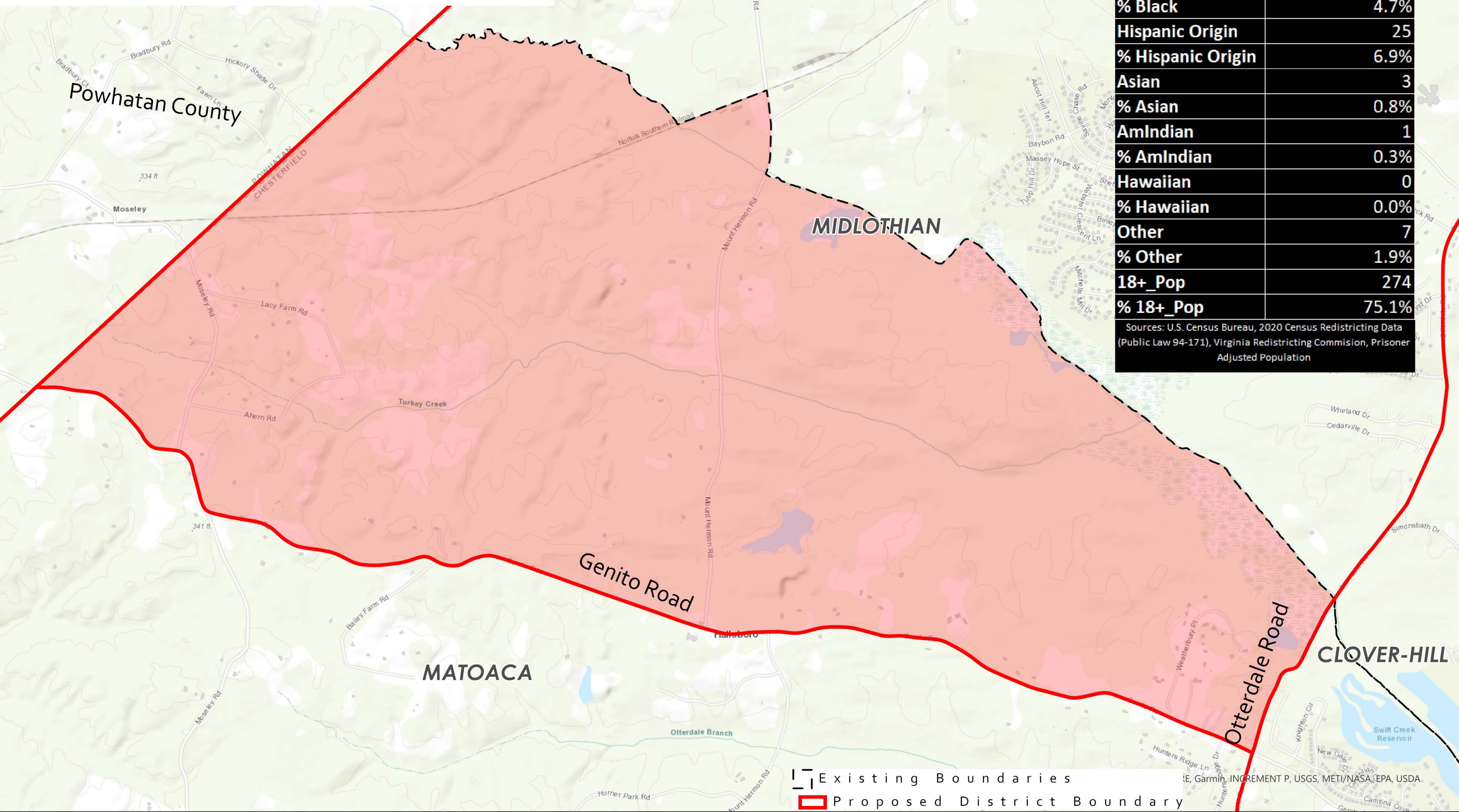


# Proposed Midlothian Addition From Matoaca



<b>Total Population</b>	<b>365</b>
<b>White</b>	<b>302</b>
<b>% White</b>	<b>82.7%</b>
<b>Black</b>	<b>17</b>
<b>% Black</b>	<b>4.7%</b>
<b>Hispanic Origin</b>	<b>25</b>
<b>% Hispanic Origin</b>	<b>6.9%</b>
<b>Asian</b>	<b>3</b>
<b>% Asian</b>	<b>0.8%</b>
<b>AmIndian</b>	<b>1</b>
<b>% AmIndian</b>	<b>0.3%</b>
<b>Hawaiian</b>	<b>0</b>
<b>% Hawaiian</b>	<b>0.0%</b>
<b>Other</b>	<b>7</b>
<b>% Other</b>	<b>1.9%</b>
<b>18+_Pop</b>	<b>274</b>
<b>% 18+_Pop</b>	<b>75.1%</b>
Sources: U.S. Census Bureau, 2020 Census Redistricting Data (Public Law 94-171), Virginia Redistricting Commission, Prisoner Adjusted Population	

Existing Boundaries  
 Proposed District Boundary

© 2023 Esri, Garmin, INCREMENT P, USGS, METI/NASA, EPA, USDA