

Chesterfield County Demographic Report

Chesterfield County Planning Department

January 2020

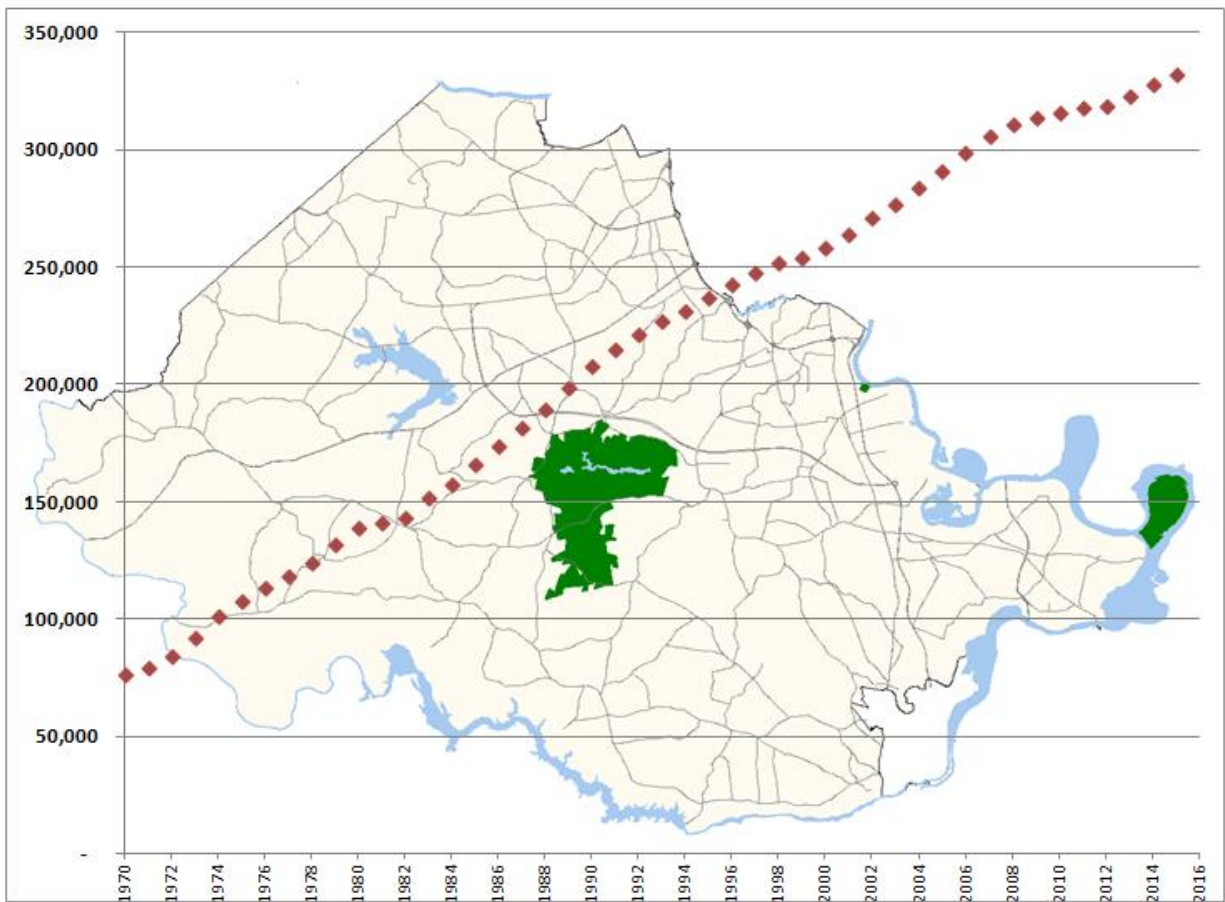


TABLE OF CONTENTS

Figures2

Executive Summary3

 Methodology3

 Chesterfield County at a Glance4

Population and Age5

 Population Projections5

Race and Ethnicity8

 Language Spoken at Home9

Educational Attainment.....10

Income and Poverty.....10

Households and Families11

Public School Enrollment.....12

Census Definitions13

FIGURES

Figure 1: Age Groups 2000-2020 5

Figure 2: Population Growth 2000-2030 6

Figure 3: Age Distribution 2000-2030 7

Figure 4: Race – 2020..... 8

Figure 5: Race and Ethnicity Trends 2000-2020 9

Figure 6: Language Spoken at Home – 2020.....10

Figure 7: Educational Attainment – 202010

Figure 8: Household Trends 2000-2020.....12

Figure 9: Public School Enrollment 2006-202012

EXECUTIVE SUMMARY

The Chesterfield County Demographic Report provides an overview of the current population along with demographic trends. Chesterfield County's population has seen a great deal of growth and change since 2000. As of December 31, 2019, the county's population is estimated to be 355,000. This is a 12 percent growth increase since the 2010 census. Between the 2000 and 2010 census, the county saw a population increase of 22 percent. The population is projected to grow 36 percent between 2010 and 2040.

In 2020, the population 14 and younger accounted for the largest age group in the county. This group includes most school-aged children. On the other end of the spectrum, the population 65 and older is projected to grow faster than any other age group. This trend is known as the "age wave" and is being seen across the nation.

In addition to an aging population, the county is becoming more racially and ethnically diverse. All racial and ethnic groups have experienced growth. Another indicator of a diversifying county is language spoken at home. Twelve percent of the population over the age of five speaks a language other than English at home. Approximately 4.8 percent of the population over five speaks English "less than very well" according to the American Community Survey.

Chesterfield County's population is well-educated. Forty-one percent of the population 25 and older has attained a bachelor's degree or higher. The household median income is \$82,599, which is higher than both the Richmond Region and Virginia. Average household size decreased from 2000 to 2010, but recently saw an increase to 2.74 in 2020.

Chesterfield County Public Schools tracks enrollment data for each school every year. Between 2006 and 2019, the number of students at all school levels remained stable. Overall, this report indicates that Chesterfield County grew moderately with an aging and increasingly diverse population. However, enrollment changes related to the COVID-19 pandemic between Fall, 2019 and Fall, 2020 have been significant. The decline in total school enrollment was 3%, with elementary enrollment declining 6%.

METHODOLOGY

The Chesterfield County Demographic Report analyzes existing demographic characteristics and trends and summarizes population projections to the year 2040. Current demographic data for this report was gathered from the December 31, 2019 American Community Survey 5-year estimates, or ACS, created by the U.S. Census Bureau. The 2000 decennial census was used in order to show trends over time. In addition, January 1 population estimates and population projections to 2040 were provided by the Chesterfield County Planning Department. Public school enrollment data was provided by Chesterfield County Public Schools. Census terms and definitions can be found on the final page of this report.

For questions or more information, please contact Catherine Bray, Senior Planner/Demographer with the Chesterfield County Planning Department, at (804)-717-6397 or Braycl@chesterfield.gov

CHESTERFIELD COUNTY AT A GLANCE

Chesterfield County at a Glance

Latest Population Estimate:		355,000	County Estimate	
Population Trends	Population Estimate	Percent Increase		
2000 Census	259,903	x		
2010 Census	316,236	22%		
2020 Projection*	350,933	10%		
2030 Projection*	390,854	10%		
Housing Units	<u>2000</u>	<u>2010</u>	<u>2020</u>	
	97,707	122,555	130,707	
Land Area	285,702	Acres	446.4	Square Miles
Age Distribution	CENSUS ESTIMATE			
	<u>2000</u>	<u>2010</u>	<u>2020</u>	Projected <u>2030</u>
Under 15	23%	21%	19%	17%
15 to 24	13%	13%	13%	11%
25 to 34	13%	12%	12%	11%
35 to 44	18%	15%	13%	14%
45 to 54	16%	16%	14%	13%
55 to 64	8%	13%	13%	12%
65 and up	8%	10%	14%	22%
Income and Poverty (Census Estimates)		Percent		
	2000	2019	Change	
Median Household Income	\$86,907	\$82,599	-5%	
Individuals in Poverty	11,586	23,060	99%	
Public School Enrollment		Percent		
	Fall 2019	Fall 2020	Change	
Elementary	27,364	25,850	-6%	
Middle	14,780	14,564	-1%	
High	19,308	19,454	1%	
Total	61,452	59,868	-3%	

POPULATION AND AGE

As of January 1, 2019, Chesterfield County’s population was estimated to be 349,000, which is an increase of 9 percent since the 2010 census. This current-year population estimate is developed annually by the Chesterfield County Planning Department.

Please refer to **Figure 1**. The 136 percent increase in the population over 65 from 2000 to 2020 is the most critical shift observed. According to the December 31, 2019 American Community Survey 5-year estimates, the largest age group is 14 and under, which accounts for 19 percent of the total population. Since 2000, the age groups 55 and older saw the most significant growth. Those 55 to 64 grew by 108 percent while those 65 and up grew 136 percent. Chesterfield County’s population has been reaching retirement age at a fast pace and will continue to do so as Baby Boomers reach age 65. The 35 to 44 age group experienced a 2 percent decrease. This decrease may result in a shrinking portion of the county’s workforce. Since 2000, Chesterfield County has experienced a shift from a young population base to an increasingly aging community.

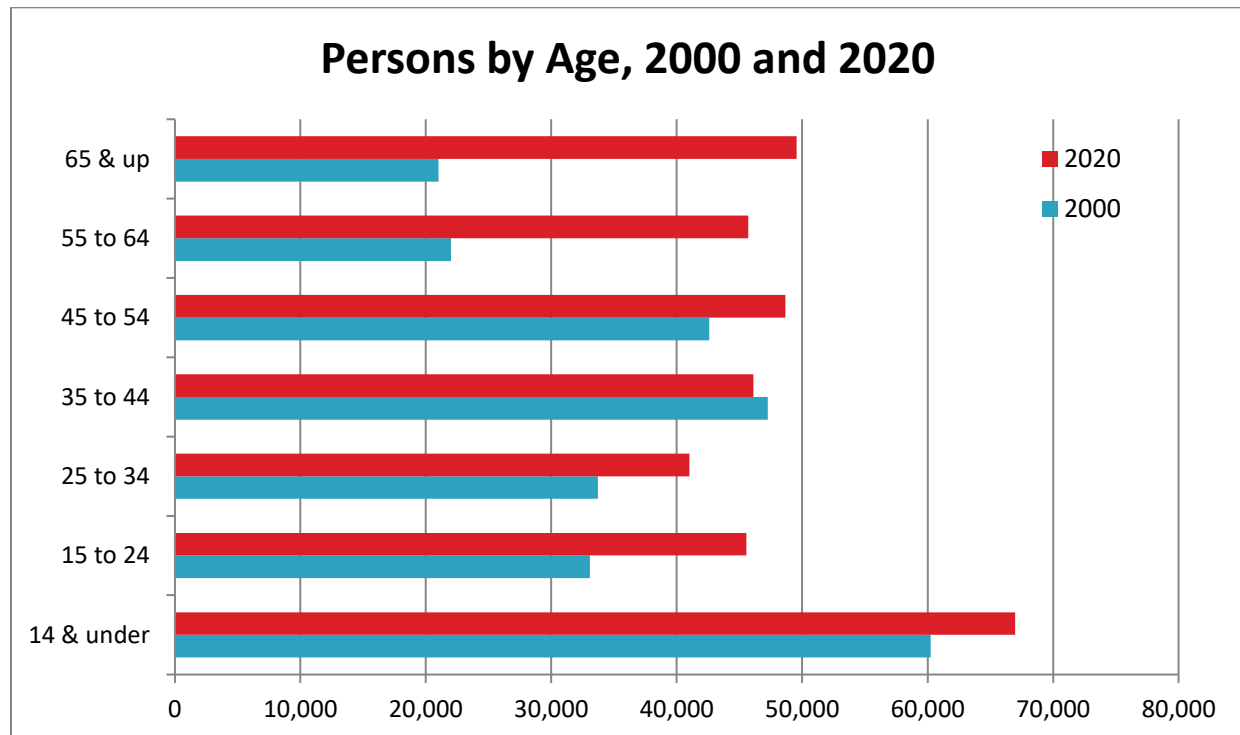


Figure 1: Age Groups 2000-2020

POPULATION PROJECTIONS

Figure 2 shows population growth in the county since 2000. The population information for 2000 and 2010 comes from the decennial censuses while the data for 2020 and 2030 comes from population projections created by the Chesterfield County Planning Department. Between 2000 and 2010, Chesterfield County saw a population increase of 22 percent. The projections estimate a slower growth rate than seen between the decennial censuses. The population is projected to grow approximately 10 percent each decade until 2030.

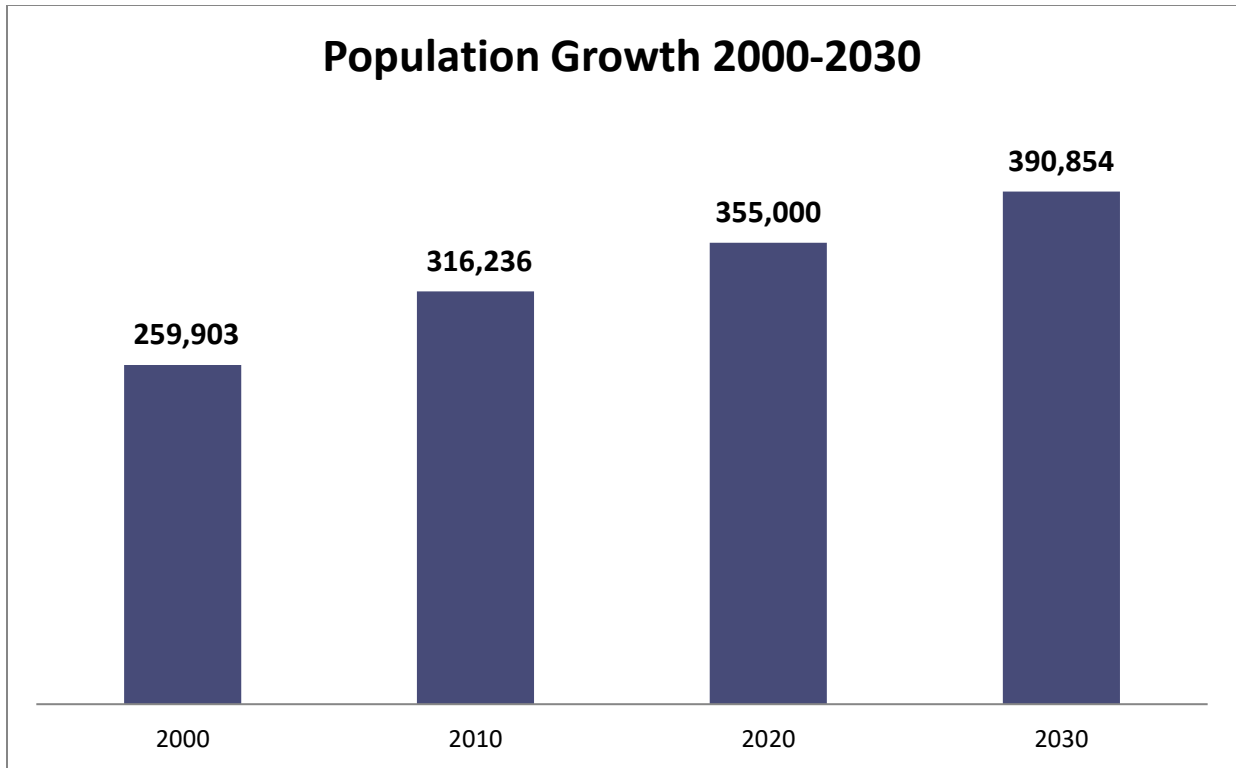


Figure 2: Population Growth 2000-2030

In [Figure 3](#), age groups from the 2000 and 2010 censuses are compared with Chesterfield County Population Projections for 2020, 2030, and 2040. The most significant increase is projected for the 65 and up population. Between 2000 and 2010, there was a 57 percent increase in this age group, and projections show a 164 percent increase between 2010 and 2030. This trend is known as the “age wave” and is being seen across the nation. On the other end of the spectrum, those 14 and younger accounted for a large portion of the county’s population in 2010, and this population is projected to maintain its size without growing significantly. This trend is attributed to a slowing birth rate and decrease of families with children in Chesterfield County.

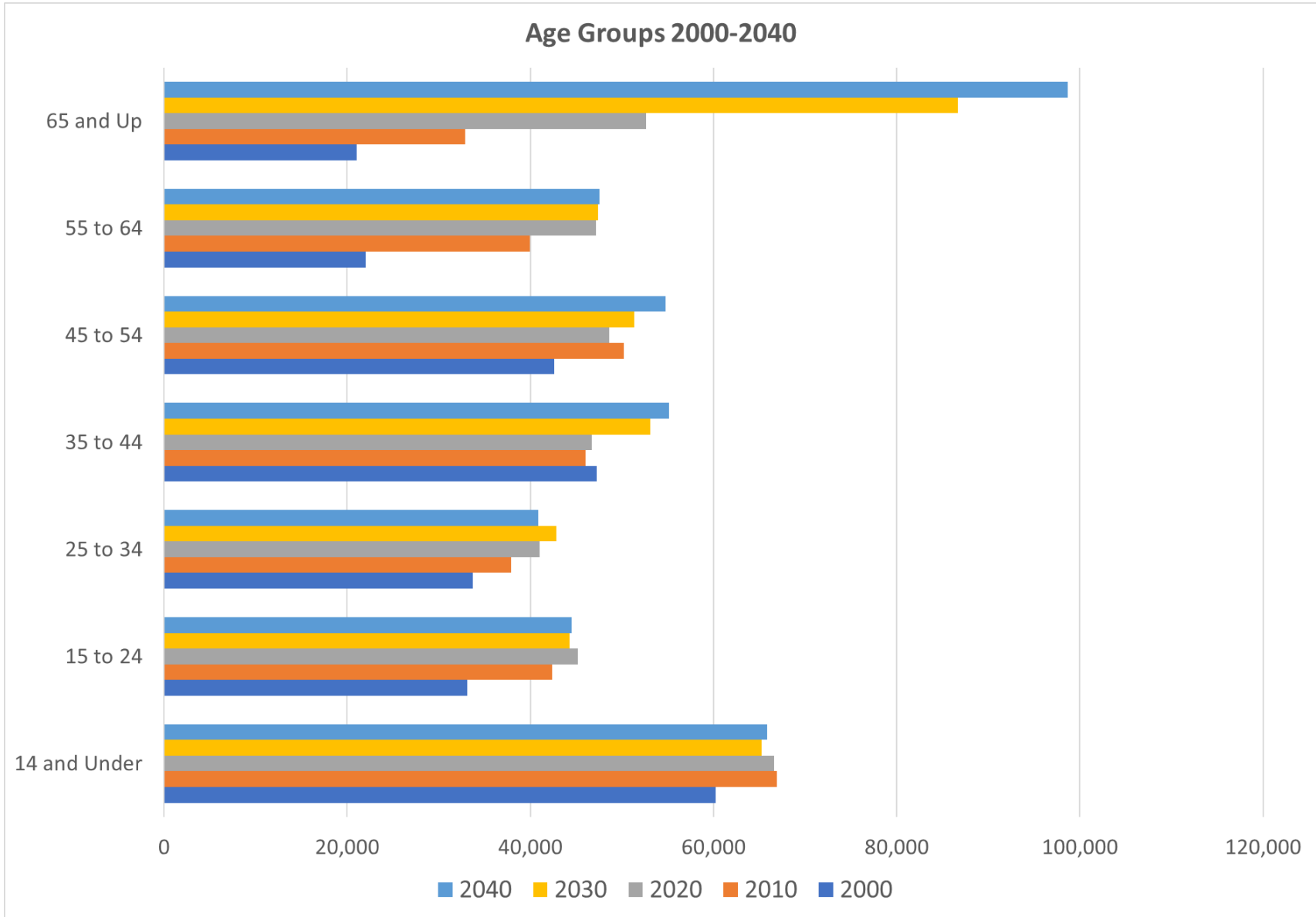


Figure 3: Age Distribution 2000-2040

RACE AND ETHNICITY

Figure 4 shows the racial and ethnic composition of Chesterfield County in 2020. White is the most common race with Black or African American being the second most common. Asian individuals account for 3.4 percent of the population. For chart readability, the racial categories American Indian and Alaska Native, Native Hawaiian and Other Pacific Islander, and Some Other Race Alone were combined. This category comprises 0.52 percent of the population. Two or more races account for 2.7 percent of the population.

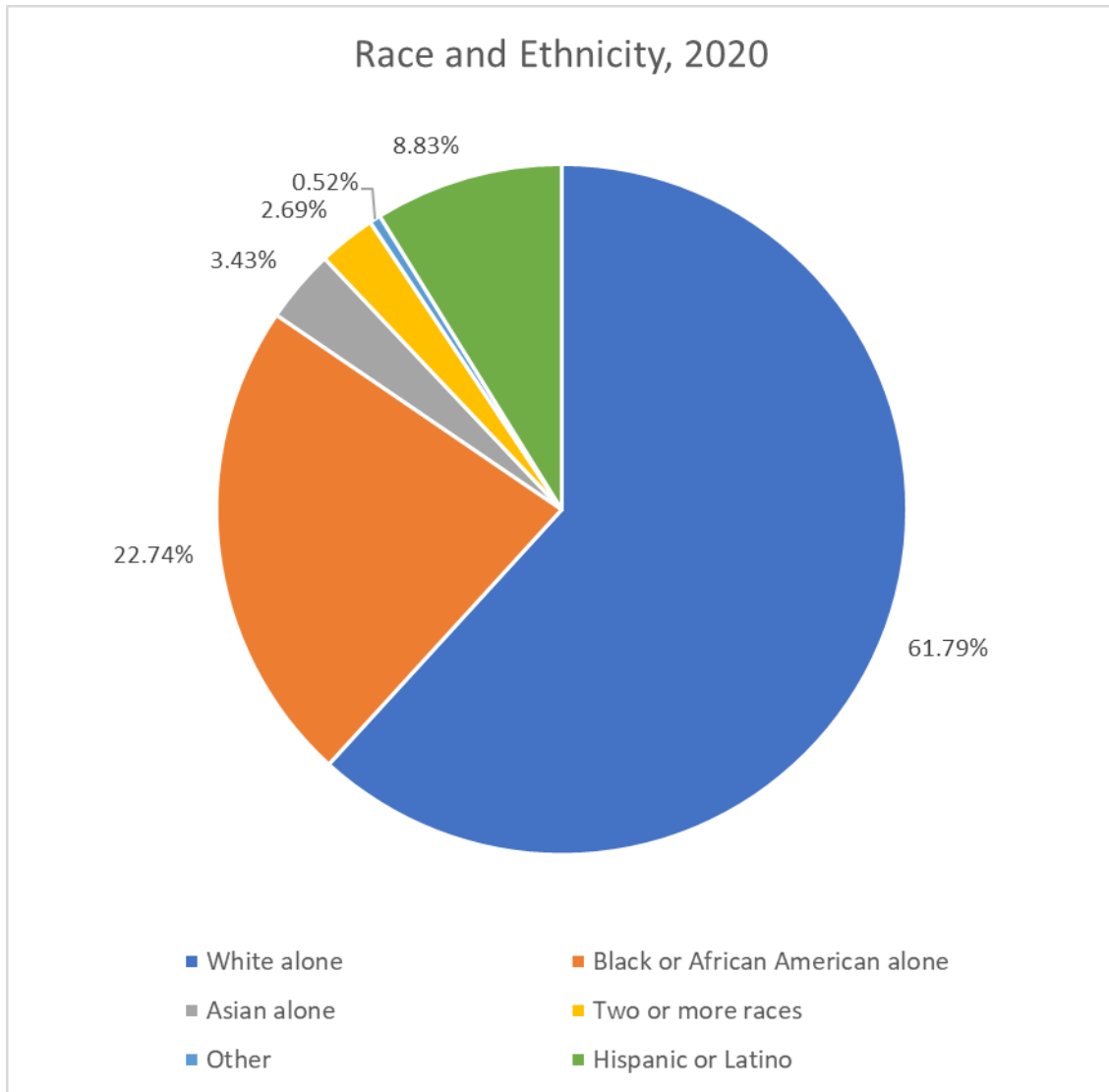


Figure 4: Race – 2020

Trends indicate that Chesterfield County, while still predominantly white, is becoming significantly more racially and ethnically diverse. In addition to noting the current composition of Chesterfield County, it is important to see how these populations have grown more diverse over time. Since 1980, the largest increase in ethnic groups was seen among Hispanics, with an increase of 2,564%. Additionally, there was a 444%

percent increase in Black or African Americans since 1980 and an 921% in the Asian population. Please refer to **Figure 5**.

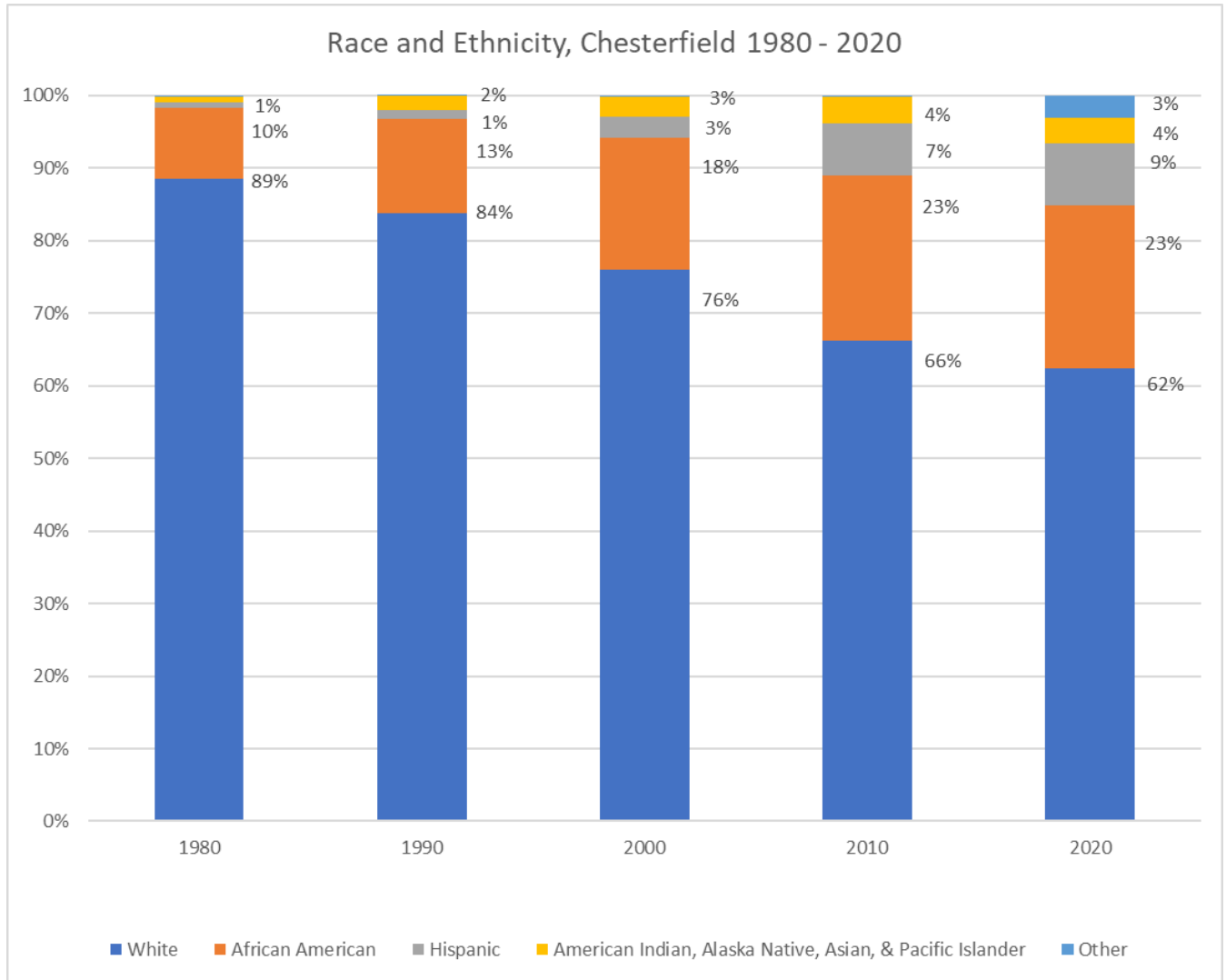


Figure 5: Race and Ethnicity Trends 2000-2020

LANGUAGE SPOKEN AT HOME

The U.S. Census Bureau breaks down survey responses on languages spoken at home starting with a base population of those 5 years and older. Of this population, 11.9 percent speak a language other than English at home with 4.8 percent not being able to speak English very well. This indicates that there may be a language barrier for this segment of the population in Chesterfield County. **Figure 6** shows a list of languages spoken at home in the county.

Language Spoken at Home	Speak English less than "very well"			
	Estimate	Percent	Estimate	Percent
Spanish	23,440	7.3%	10,985	3.4%
Asian and Pacific Islander	6,008	1.9%	2,736	0.8%
Other languages	9,032	2.8%	1,863	0.6%

Figure 6: Language Spoken at Home – 2019

EDUCATIONAL ATTAINMENT

According to American Community Survey 5-year estimates, 40 percent of the population 25 years and older received a bachelor’s or graduate degree, which is reflected in Figure 7. Chesterfield County’s population is well-educated. While most of the population graduated high school, note that 7 percent of people received less than a high school education.

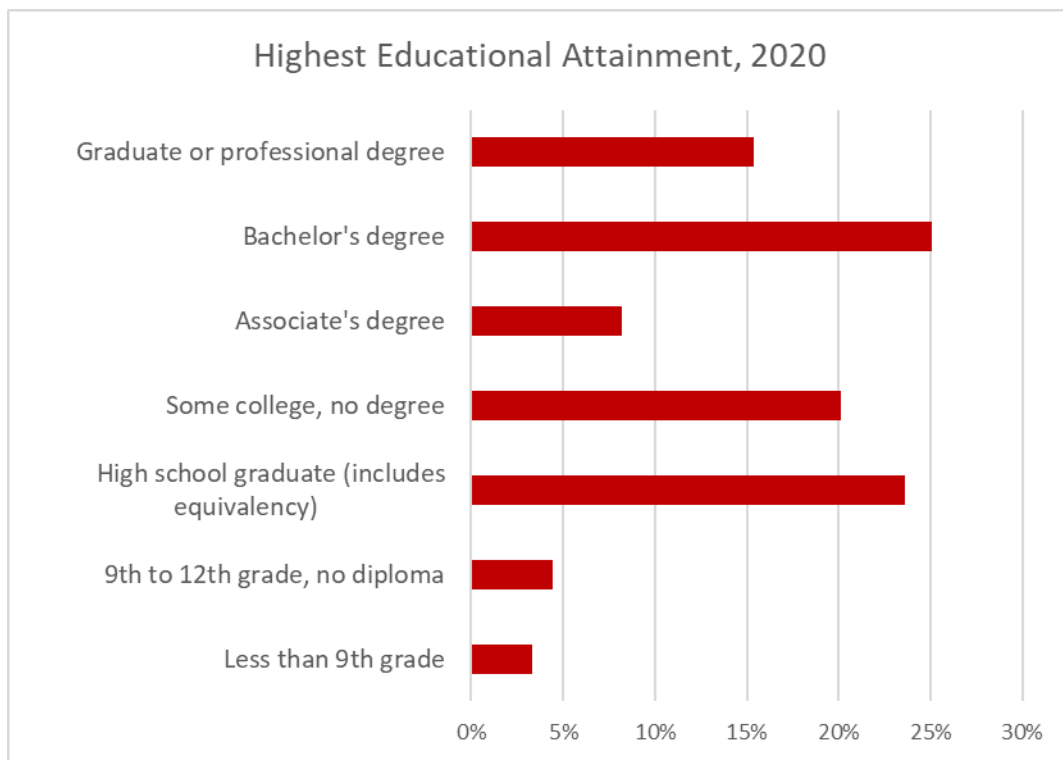


Figure 7: Educational Attainment – 2020

INCOME AND POVERTY

As of 2020, Chesterfield County’s median household income is \$82,599, which exceeds that of the region, state and nation and indicates a generally more affluent locality. When adjusting for inflation, Chesterfield County saw a decline in median household income with a decrease of eight percent since 2000. Poverty is another important economic indicator to consider. Chesterfield County has a poverty rate of 6.8 percent,

which accounts for 23,060 individuals. While the county has a lower poverty rate compared to the region, state and nation, the number of individuals in poverty is growing with an increase of 110 percent since 2000. The rise in suburban poverty is being seen across the Richmond region, Virginia and the United States. As cities are redeveloping and seeing stable or declining poverty rates, the inner-ring suburbs are seeing an increase. For more detailed information regarding income and poverty, please see the Chesterfield County Income and Poverty Report in the [Economic Information](#) section on the county webpage.

HOUSEHOLDS AND FAMILIES

Average household size decreased from 2.73 in 2000 to 2.69 in 2010 but increased to 2.74 in 2020. Since 2000, Chesterfield has seen a shift in its household types. Nonfamily households and families without children have seen the most growth while the number of families with children declined slightly. Nonfamily households saw the largest growth of 36 percent. These households consist of people living alone or two or more people living together who are not related by birth, marriage or adoption. Most nonfamily households consisted of individuals living alone, a third of which are age 65 and older. The second largest growth was seen in families with no children, which experienced a 32 percent increase. For the census definitions of households and families, please refer to the [Census Definitions](#) section at the end of this report.

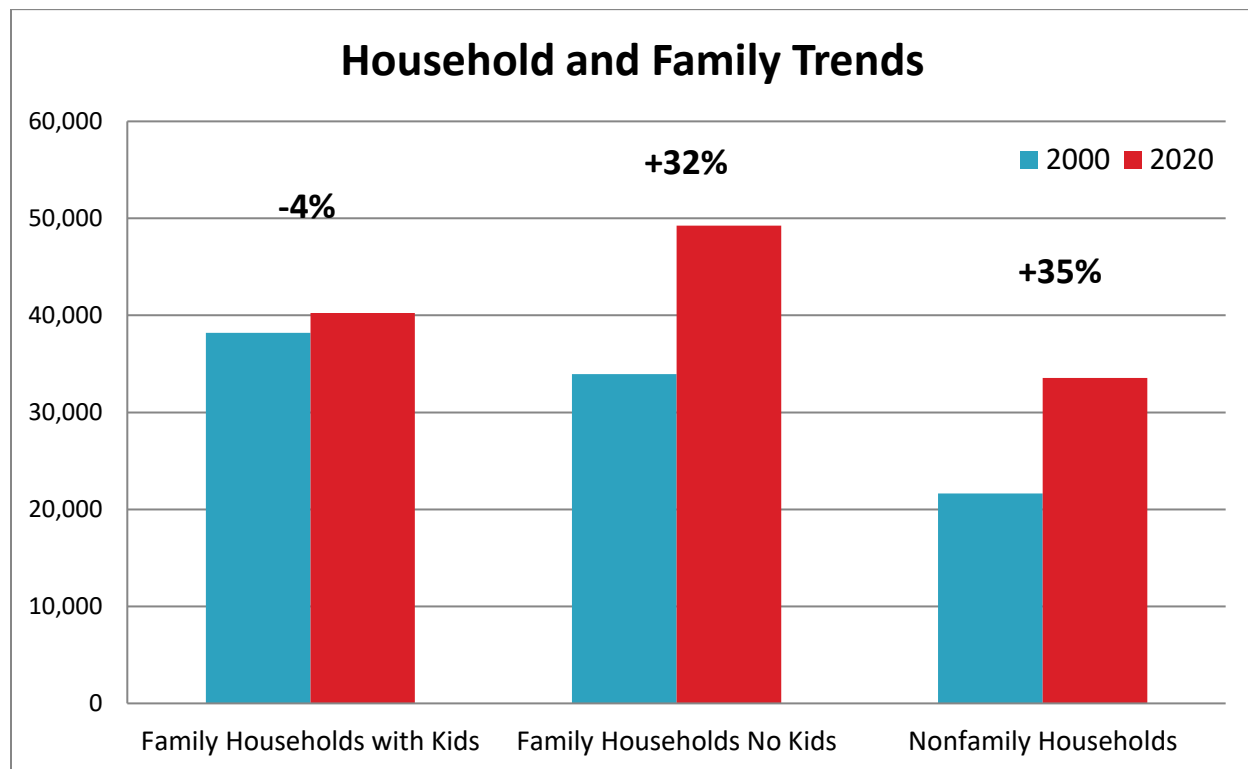


Figure 8: Household Trends 2000-2018

PUBLIC SCHOOL ENROLLMENT

Figure 9 shows Chesterfield County Public School enrollment from Fall 2006 and Fall 2019. These trends show that the county’s public school enrollment have been stable over the past decade. As of 2019, there are over 27,000 elementary school students, nearly 15,000 middle school students, and over 19,000 high school students in Chesterfield County Public Schools. However, enrollment changes related to the COVID-19 pandemic between Fall, 2019 and Fall, 2020 have been significant. The decline in total school enrollment was 3%, with elementary enrollment declining 6%.

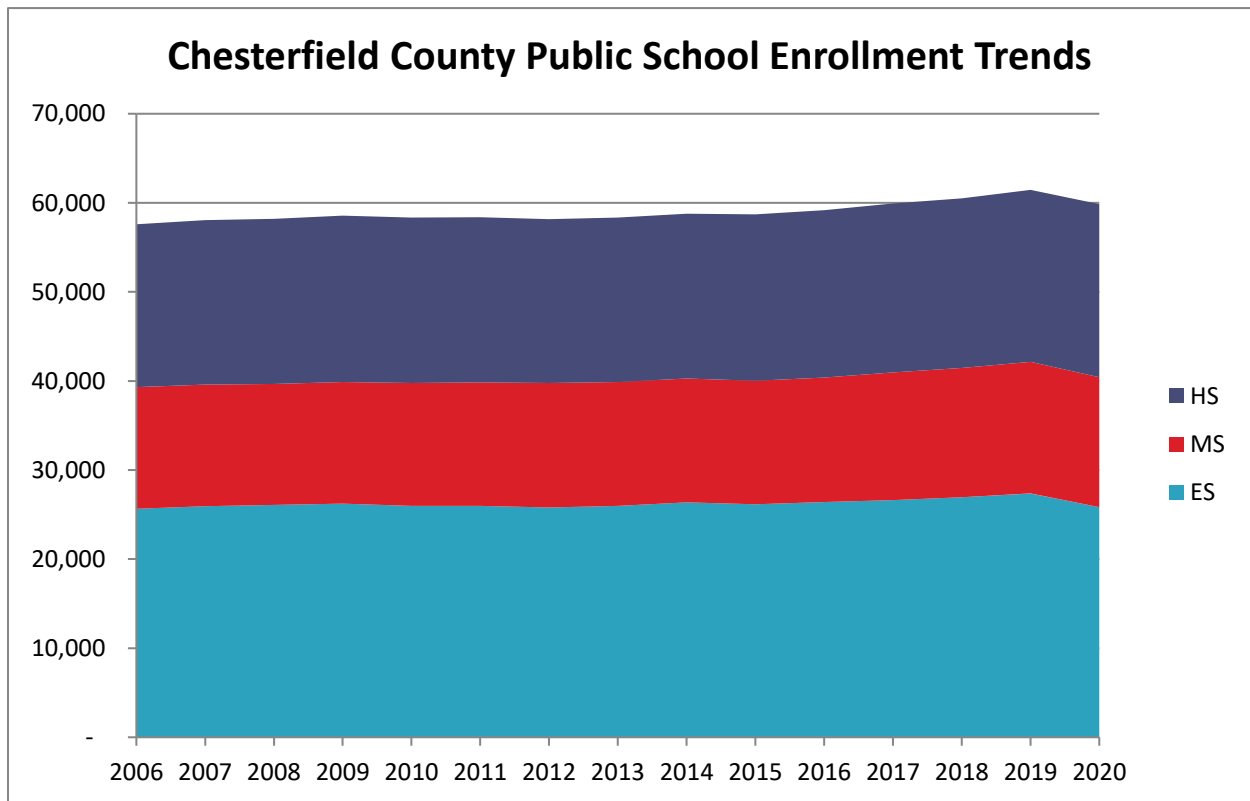


Figure 9: Public School Enrollment 2006-2016

CENSUS DEFINITIONS

The following definitions are from the U.S. Census Bureau's glossary, which can be found at <http://factfinder.census.gov/help/en/index.htm#glossary.htm>

Educational Attainment – Refers to the highest level of education completed in terms of the highest degree or the highest level of schooling completed.

Ethnicity – Ethnic origin refers to an individual's self-identification of their origin or descent, "roots," heritage, or place where the individual or his/her parents or ancestors were born. Respondents could report their ethnic group regardless of the number of generations removed from their place of origin.

Family – A group of two or more people who reside together and who are related by birth, marriage, or adoption.

Hispanic or Latino Origin – Origin can be viewed as the heritage, nationality group, lineage, or country of birth of the person or the person's parents or ancestors before their arrival in the United States or Island Area. People who identify their origin as Hispanic, Latino, or Spanish may be of any race.

Household – A household includes all the people who occupy a housing unit as their usual place of residence.

Household Income - This includes the income of the householder and all other individuals 15 years old and over in the household, whether they are related to the householder or not.

Language Spoken at Home – The language currently used by respondents at home, either "English only" or a non-English language which is used in addition to English or in place of English.

Median Income –The median income divides the income distribution into two equal groups, one having incomes above the median, and other having incomes below the median.

Poverty – Following the Office of Management and Budget's (OMB's) Directive 14, the Census Bureau uses a set of money income thresholds that vary by family size and composition to determine who is in poverty. If the total income for a family or unrelated individual falls below the relevant poverty threshold, then the family (and every individual in it) or unrelated individual is considered in poverty.

Race – The U.S. Census Bureau collects race data in accordance with guidelines provided by the U.S. Office of Management and Budget (OMB), and these data are based on self-identification. The racial categories included in the census questionnaire generally reflect a social definition of race recognized in this country, and not an attempt to define race biologically, anthropologically, or genetically. In addition, it is recognized that the categories of the race item include racial and national origin or socio-cultural groups.