

PROJECT MANAGER MICHAEL GRAY (804) 814-2503
SURVEYED BY DATE TIMMONS GROUP (804) 200-6500, 09/22/2019
DESIGN BY TIMMONS GROUP (804) 200-6500
SUBSURFACE UTILITY BY DATE TIMMONS GROUP (804) 200-6500, 09/20/19

CROSS SECTIONS

SCALE 1 IN. = 10 FT

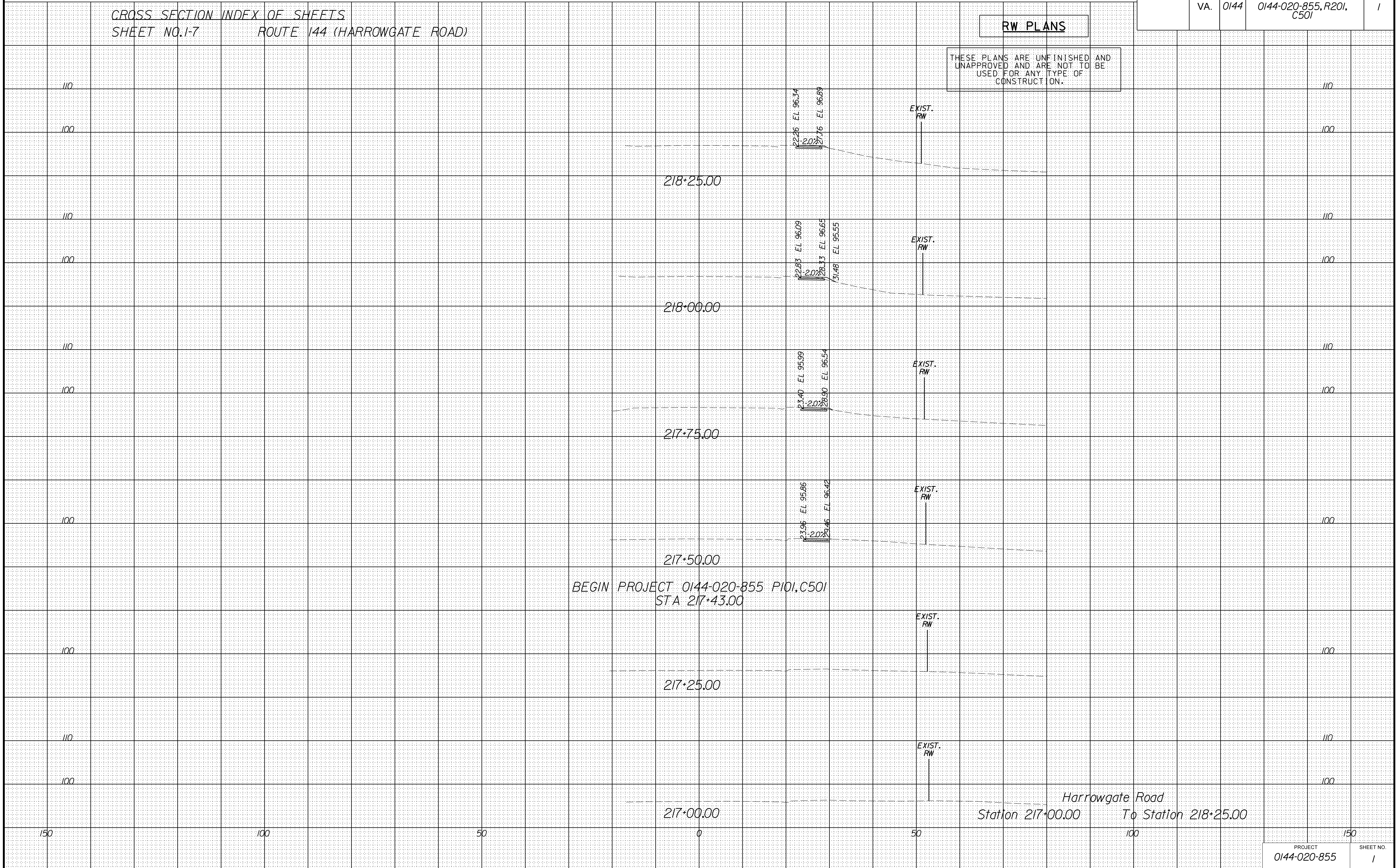
DESIGN FEATURES RELATING TO CONSTRUCTION OR TO REGULATION AND CONTROL OF TRAFFIC MAY BE SUBJECT TO CHANGE AS DEEMED NECESSARY BY THE DEPARTMENT

REVISED	STATE	ROUTE	STATE	PROJECT	SHEET NO.
	VA.	0144		0144-020-855, R201, C501	1

CROSS SECTION INDEX OF SHEETS
SHEET NO. 1-7 ROUTE 144 (HARROWGATE ROAD)

RW PLANS

THESE PLANS ARE UNFINISHED AND UNAPPROVED AND ARE NOT TO BE USED FOR ANY TYPE OF CONSTRUCTION.



PROJECT MANAGER MICHAEL GRAY (804) 814-2503
SURVEYED BY DATE TIMMONS GROUP (804) 200-6500, 09/22/2019
DESIGN BY TIMMONS GROUP (804) 200-6500
SUBSURFACE UTILITY BY DATE TIMMONS GROUP (804) 200-6500, 09/20/2019

CROSS SECTIONS

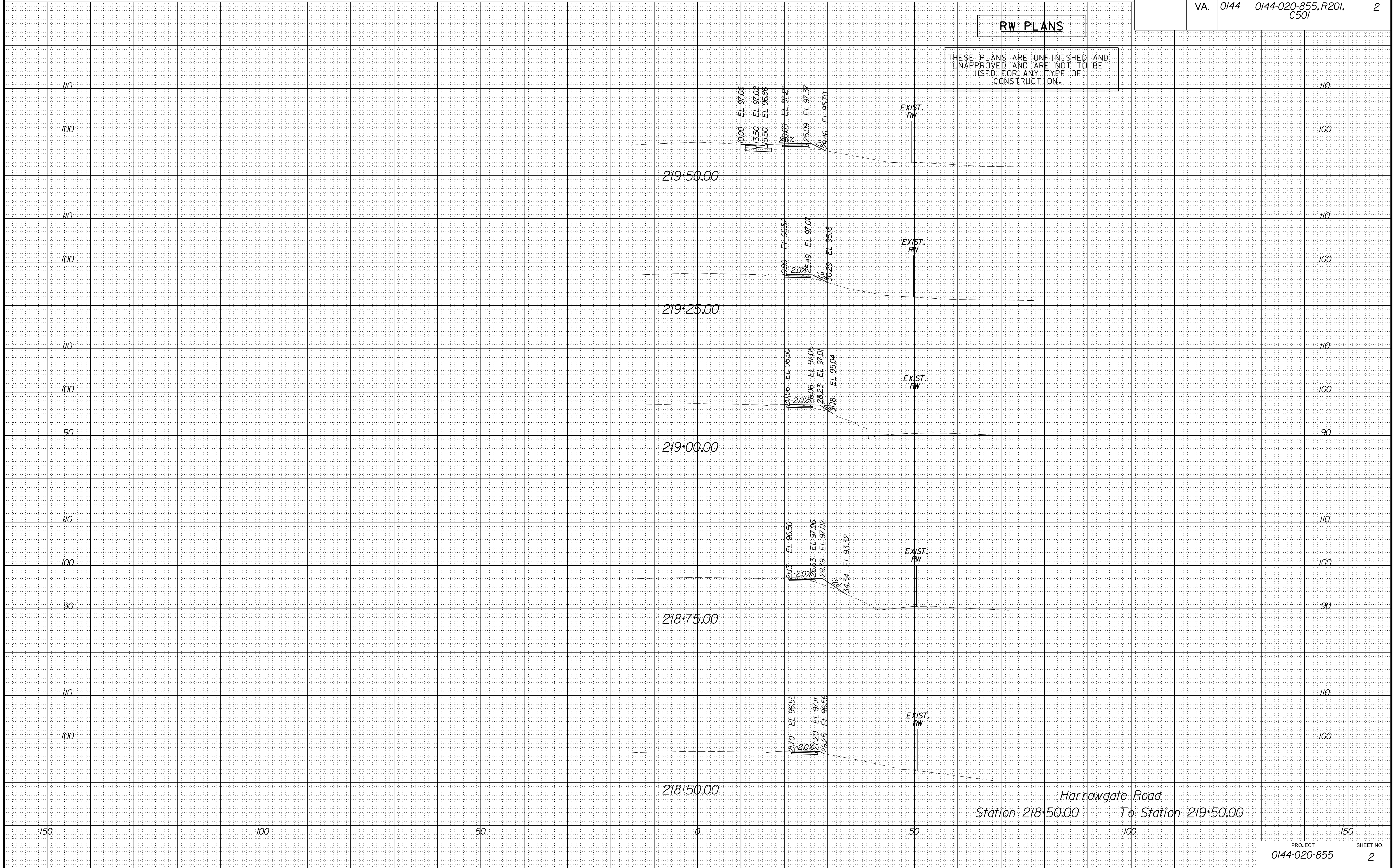
SCALE 1 IN. = 10 FT

DESIGN FEATURES RELATING TO CONSTRUCTION OR TO REGULATION AND CONTROL OF TRAFFIC MAY BE SUBJECT TO CHANGE AS DEEMED NECESSARY BY THE DEPARTMENT

REVISED	STATE	ROUTE	STATE	PROJECT	SHEET NO.
	VA.	0144		0144-020-855, R201, C501	2

RW PLANS

THESE PLANS ARE UNFINISHED AND UNAPPROVED AND ARE NOT TO BE USED FOR ANY TYPE OF CONSTRUCTION.



PROJECT MANAGER MICHAEL GRAY (804) 814-2503
SURVEYED BY DATE TIMMONS GROUP (804) 200-6500, 09/22/2019
DESIGN BY TIMMONS GROUP (804) 200-6500
SUBSURFACE UTILITY BY DATE TIMMONS GROUP (804) 200-6500, 09/20/19

CROSS SECTIONS

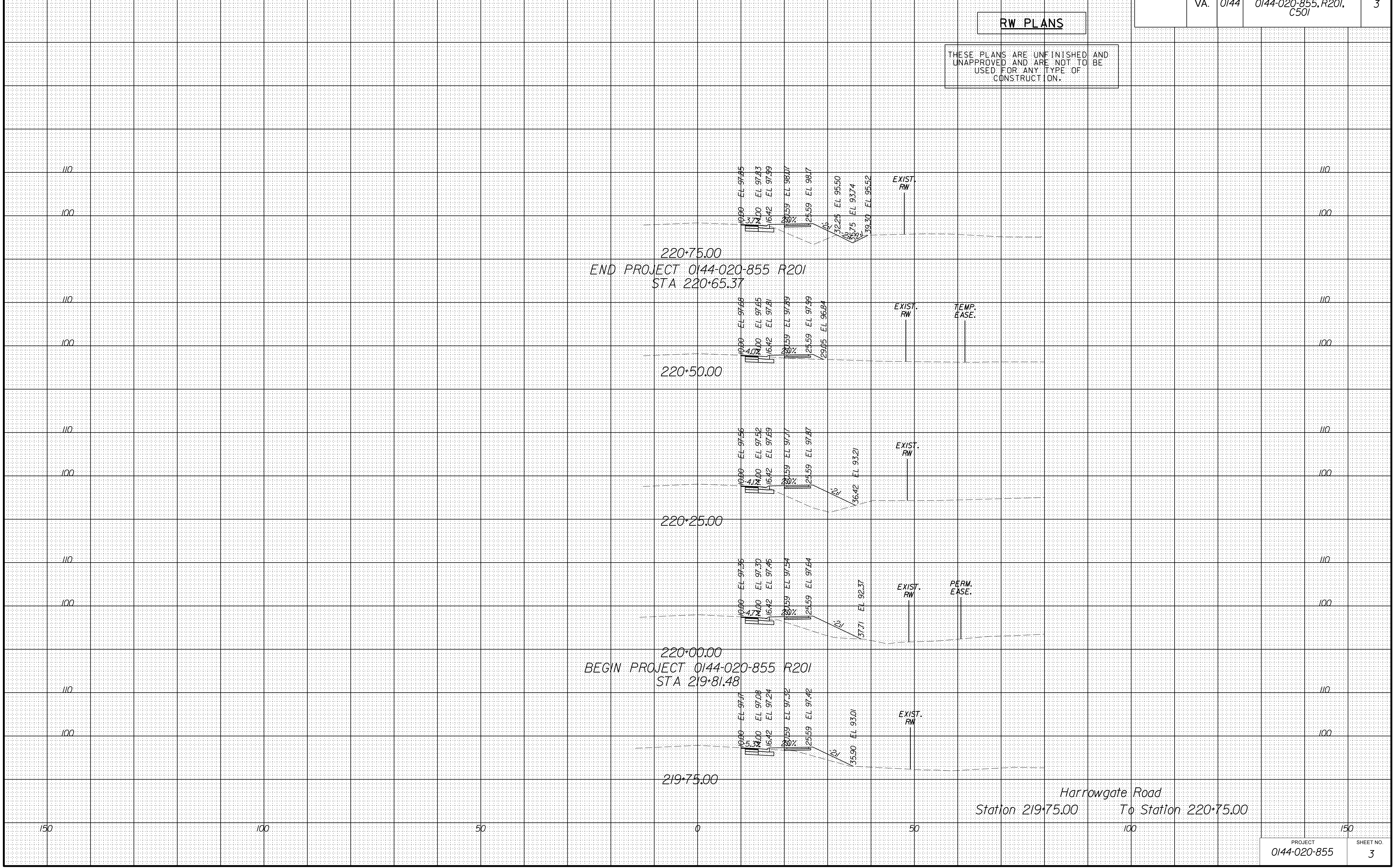
SCALE 1 IN. = 10 FT

DESIGN FEATURES RELATING TO CONSTRUCTION OR TO REGULATION AND CONTROL OF TRAFFIC MAY BE SUBJECT TO CHANGE AS DEEMED NECESSARY BY THE DEPARTMENT

REVISED	STATE	ROUTE	STATE	PROJECT	SHEET NO.
	VA.	0144		0144-020-855, R201, C501	3

RW PLANS

THESE PLANS ARE UNFINISHED AND UNAPPROVED AND ARE NOT TO BE USED FOR ANY TYPE OF CONSTRUCTION.



PROJECT MANAGER MICHAEL GRAY (804) 814-2503
SURVEYED BY DATE TIMMONS GROUP (804) 200-6500, 09/22/2019
DESIGN BY TIMMONS GROUP (804) 200-6500
SUBSURFACE UTILITY BY DATE TIMMONS GROUP (804) 200-6500, 09/20/19

CROSS SECTIONS

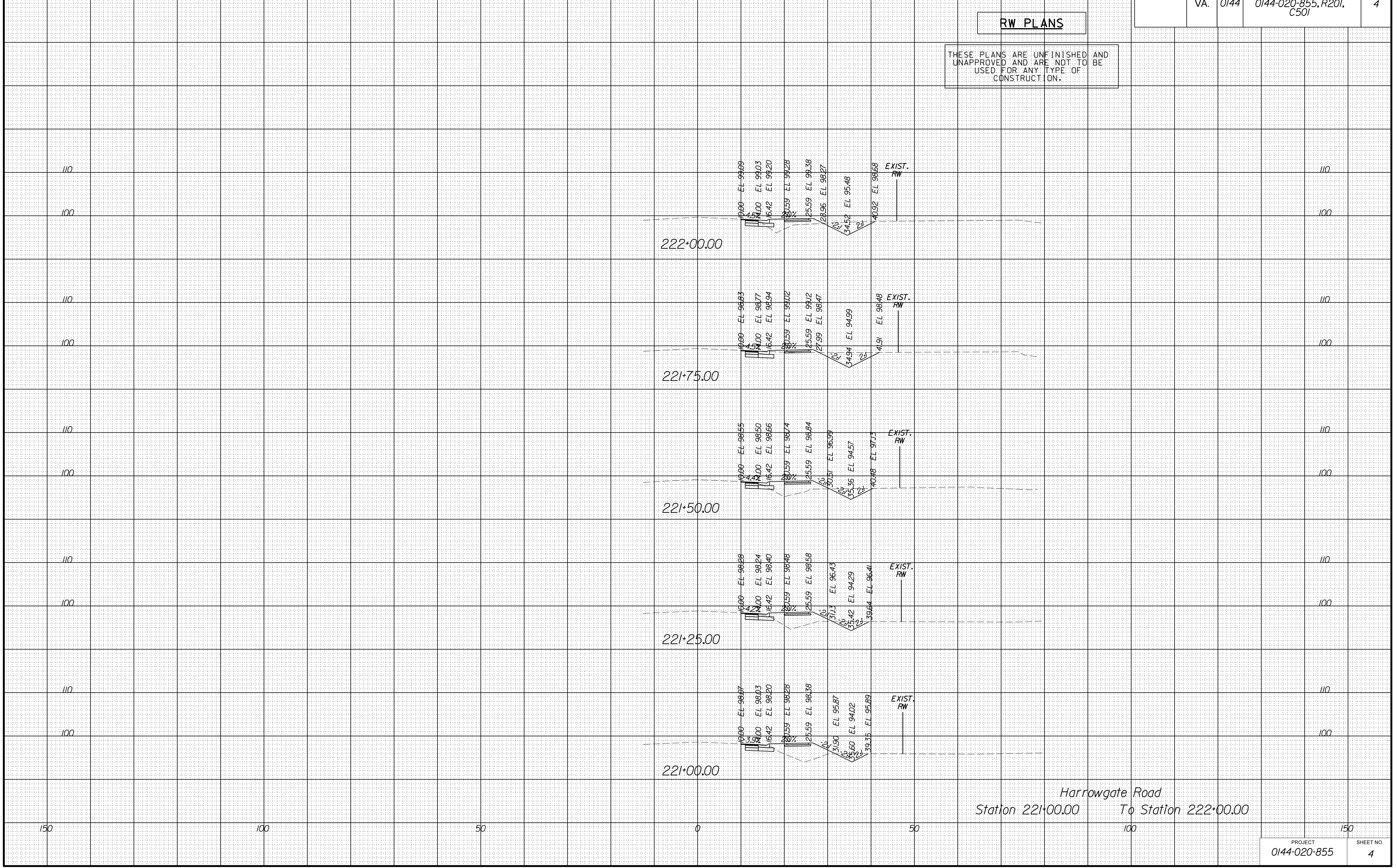
SCALE 1 IN. = 10 FT

DESIGN FEATURES RELATING TO CONSTRUCTION OR TO REGULATION AND CONTROL OF TRAFFIC MAY BE SUBJECT TO CHANGE AS DEEMED NECESSARY BY THE DEPARTMENT

REVISED	STATE	ROUTE	STATE	PROJECT	SHEET NO.
	VA.	0144		0144-020-855, R201, C501	4

RW PLANS

THESE PLANS ARE UNFINISHED AND UNAPPROVED AND ARE NOT TO BE USED FOR ANY TYPE OF CONSTRUCTION.



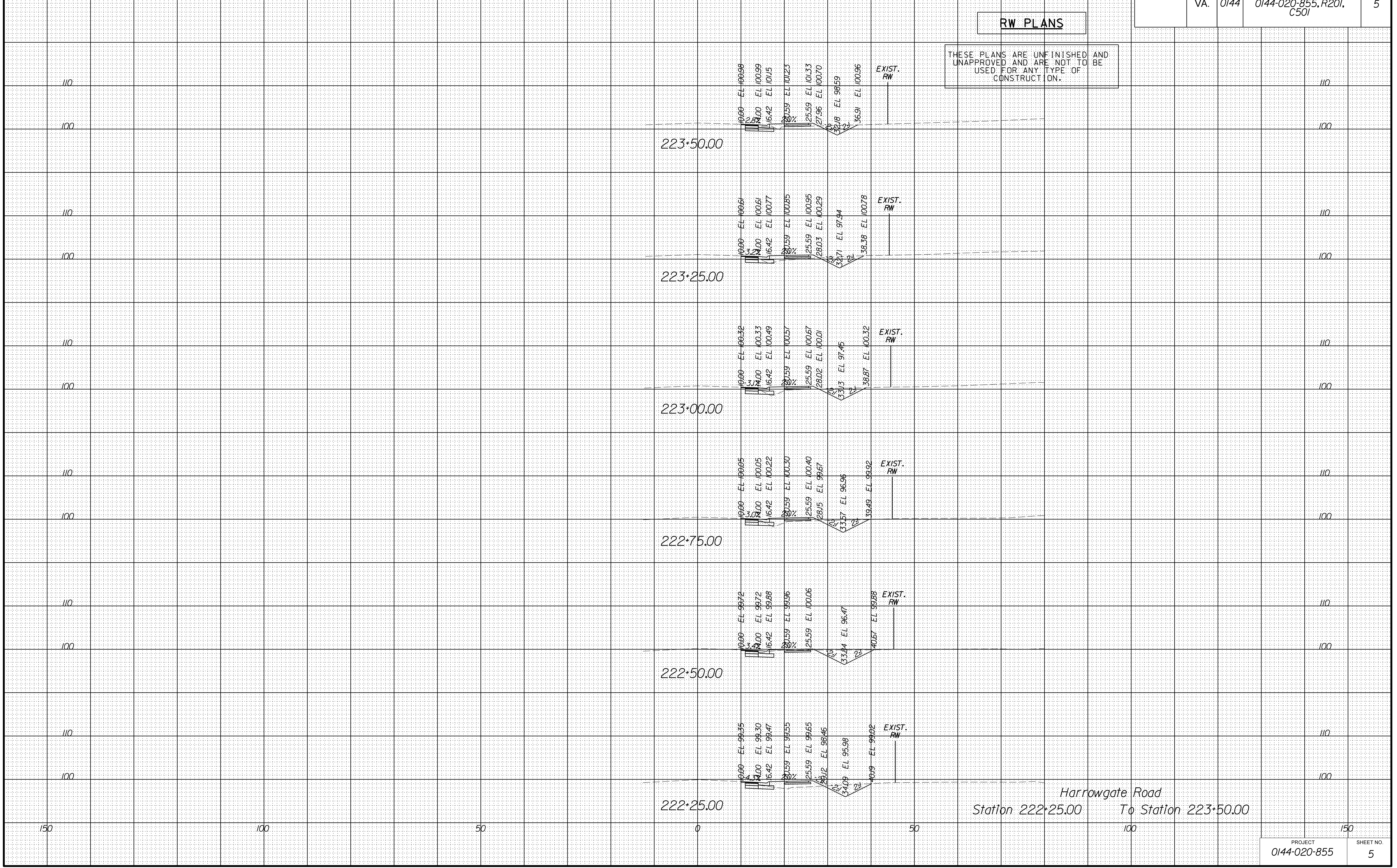
PROJECT MANAGER MICHAEL GRAY (804) 814-2503
SURVEYED BY, DATE JIMMONS, GROUP (804) 200-6500, 09/2019
DESIGN BY JIMMONS, GROUP (804) 200-6500
SUBSURFACE UTILITY BY, DATE JIMMONS, GROUP (804) 200-6500, 09/2019

CROSS SECTIONS

SCALE 1 IN. = 10 FT

DESIGN FEATURES RELATING TO CONSTRUCTION OR TO REGULATION AND CONTROL OF TRAFFIC MAY BE SUBJECT TO CHANGE AS DEEMED NECESSARY BY THE DEPARTMENT

REVISED	STATE	ROUTE	STATE	PROJECT	SHEET NO.
	VA.	0144		0144-020-855, R201, C501	5



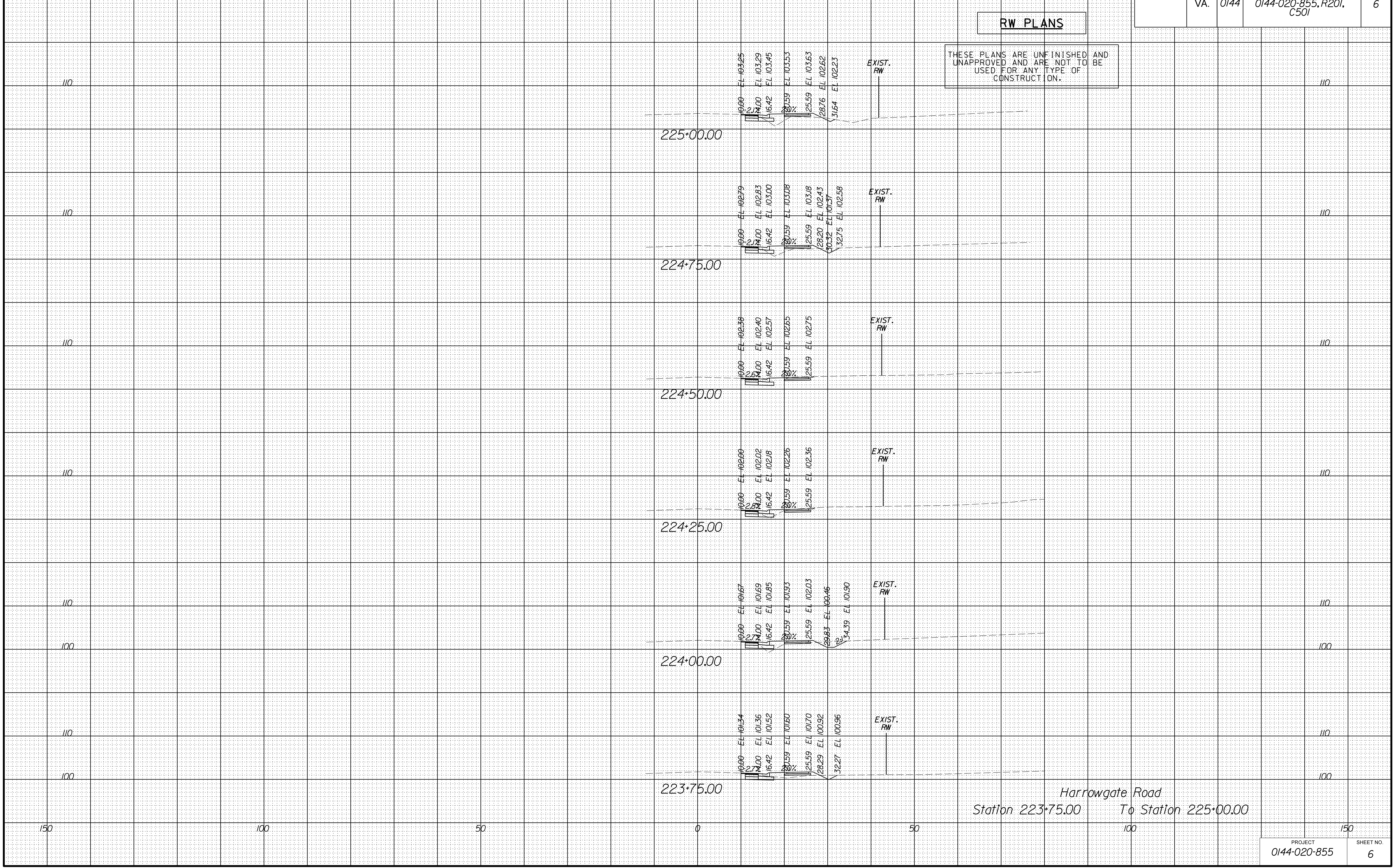
PROJECT MANAGER MICHAEL GRAY (804) 814-2503
SURVEYED BY, DATE JIMMONS, GROUP (804) 200-6500, 09/22/19
DESIGN BY JIMMONS, GROUP (804) 200-6500
SUBSURFACE UTILITY BY, DATE JIMMONS, GROUP (804) 200-6500, 09/20/19

CROSS SECTIONS

SCALE 1 IN. = 10 FT

DESIGN FEATURES RELATING TO CONSTRUCTION OR TO REGULATION AND CONTROL OF TRAFFIC MAY BE SUBJECT TO CHANGE AS DEEMED NECESSARY BY THE DEPARTMENT

REVISED	STATE	ROUTE	STATE	PROJECT	SHEET NO.
	VA.	0144		0144-020-855, R201, C501	6



Harrowgate Road
Station 223+75.00 To Station 225+00.00

PROJECT MANAGER MICHAEL GRAY (804) 814-2503
SURVEYED BY DATE TIMMONS GROUP (804) 200-6500, 09/22/19
DESIGN BY TIMMONS GROUP (804) 200-6500
SUBSURFACE UTILITY BY DATE TIMMONS GROUP (804) 200-6500, 09/20/19

CROSS SECTIONS

SCALE 1 IN. = 10 FT

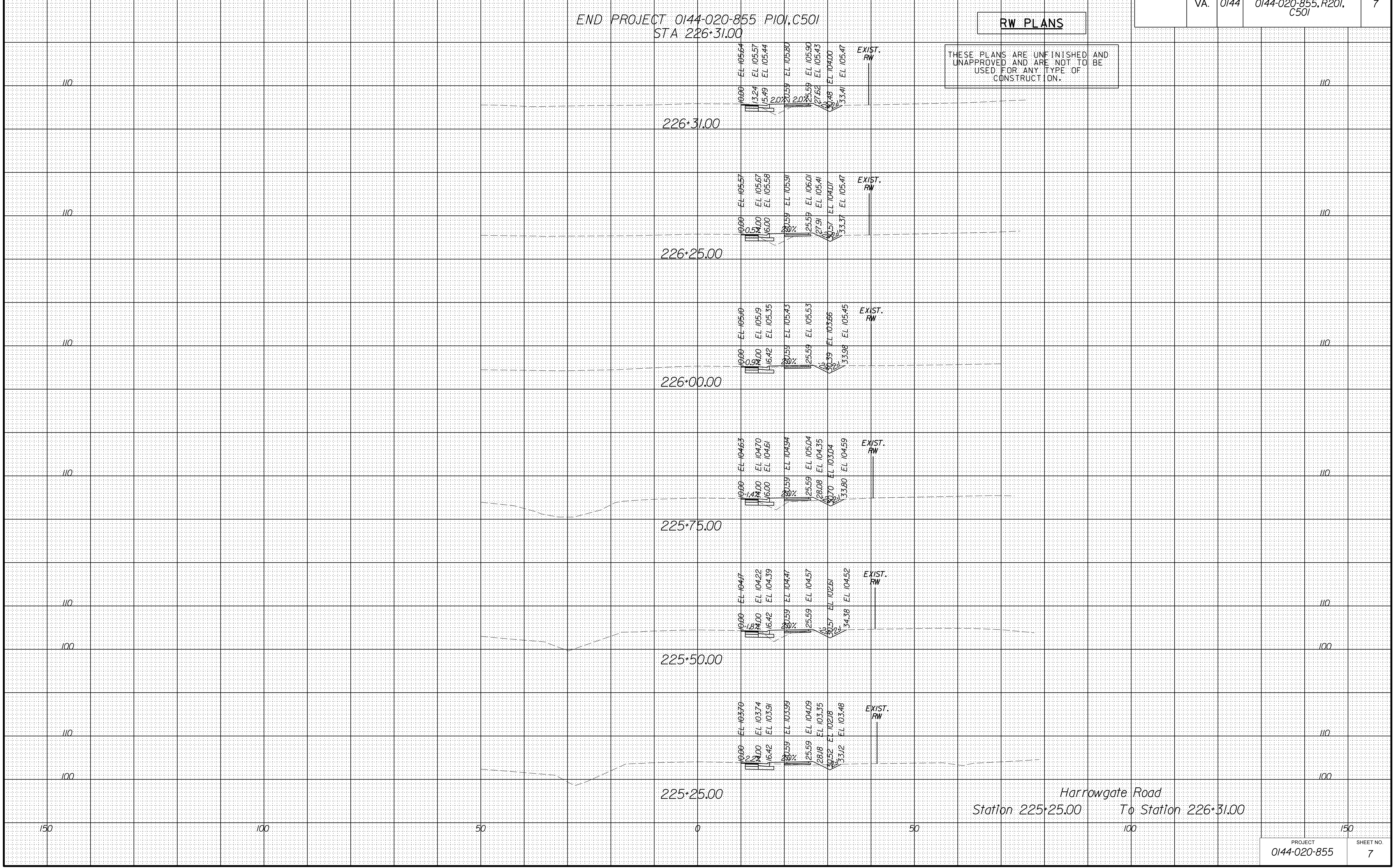
DESIGN FEATURES RELATING TO CONSTRUCTION OR TO REGULATION AND CONTROL OF TRAFFIC MAY BE SUBJECT TO CHANGE AS DEEMED NECESSARY BY THE DEPARTMENT

REVISED	STATE	ROUTE	STATE	PROJECT	SHEET NO.
	VA.	0144		0144-020-855, R201, C501	7

END PROJECT 0144-020-855 P101, C501
STA 226+31.00

RW PLANS

THESE PLANS ARE UNFINISHED AND UNAPPROVED AND ARE NOT TO BE USED FOR ANY TYPE OF CONSTRUCTION.



Harrowgate Road
Station 225+25.00 To Station 226+31.00