



TOUCHING BASE

Volume 4, Issue 2

January 18, 2019

CELEBRATING NEW ARCHERY RANGES

Rockwood Nature Center archery programs love their new spaces at the old Beulah Elementary School.

After a quick set up and move in, practices have kicked off again for our adult group and Junior Olympic Archery Development (JOAD) club last week. Additionally, the Star Shooters youth development program started their first practices of the season this past Tuesday.



This issue

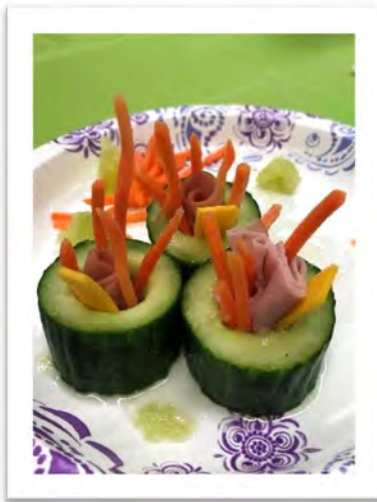
Therapeutic Recreation	2
Park Operations	3
Henricus Historical Park	4
Parks Planning/Design and Construction	5



THERAPEUTIC RECREATION

Snackin' It Up

Started off the season with a fun program making cucumber sushi and blueberry cheesecake crackers during Snackin' It up at Ettrick Recreation Center.



Bingo Zone

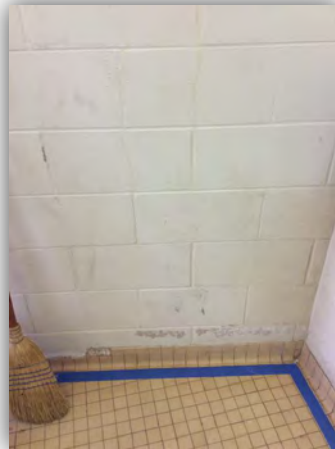
Full house for first session of Bingo Zone held at Bon Air Library on Tuesday, January 15.



B I N G O				
7	25	44	57	62
15	22	40	50	70
11	30	FREE SPACE	46	74
2	28	37	55	68
10	27	39	59	75

PARK OPERATIONS

Keith Wells and James Durst, principal maintenance workers, gave CTC @ Hull's restrooms a fresh coat of paint and got rid of chipped and peeling paint.



Keith Wells taping and prepping the restrooms for painting.



HENRICUS HISTORICAL PARK

The Henricus staff spent three days last week visiting historical sites as part of their winter staff development. Site visits included the Frontier Culture Museum in Staunton, stops around Fredericksburg, and Historic Halifax in North Carolina. The team was able to not only see other historic sites, but gain insight into the operations of similar museums, discuss common struggles and successes, and gather new ideas for the site.



PARKS PLANNING/DESIGN AND CONSTRUCTION

The East Coast Greenway is a developing biking and walking route from Canada to Key West. The nonprofit East Coast Greenway Alliance partners with city, state, regional and national leaders to advance the 3,000-mile route, one third of which is now on paths that are safe for all ages and abilities. The goal of completing the Greenway, the nation's longest linear park, represents a commitment to public health, environmental sustainability, economic development, and civic engagement.

Chesterfield County received their first East Coast Greenway designation January 5, 2019. The Board of Trustees and Greenway Council of the East Coast Greenway Alliance recognized the Woodpecker Road Multi-Use Path as part of the East Coast Greenway. East Coast Greenway trail markers will be placed by Chesterfield County Parks and Recreation. Additional portions of the East Coast Greenway are being considered throughout the county. Visit the East Coast Greenway website (www.greenway.org) for more information about this multistate trail.



East Coast Greenway
Woodpecker Road Multi-Use Path



Proposed Woodpecker Road Multi-Use Path from Lake Margaret to Pocahontas State Park



Completed 0.5 Mile Lake Margaret Home Owners Association Trail

SOCIAL MEDIA

Chesterfield.gov/parks



www.twitter.com/CCPRVA



www.facebook.com/chesterfieldvaparksrec



Quite a bit happening at Bensley Recreation Center

